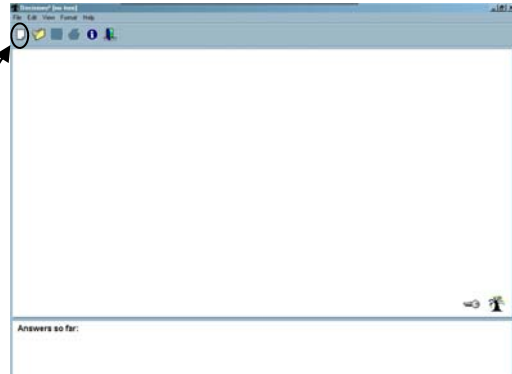


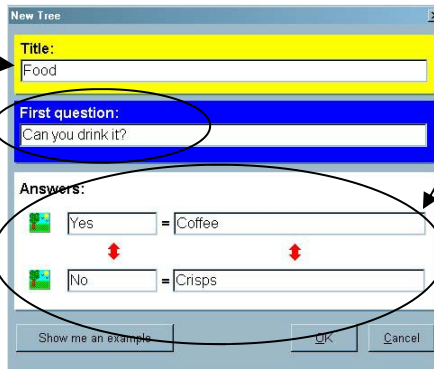
# A quick guide to Decisions

In this example 4 objects are considered: coffee, water, crisps and cheese.  
However many more objects can be added

- 1) Open up Decisions from the BlackCat icon.
- 2) Click on 'new' to start creating a branching database.

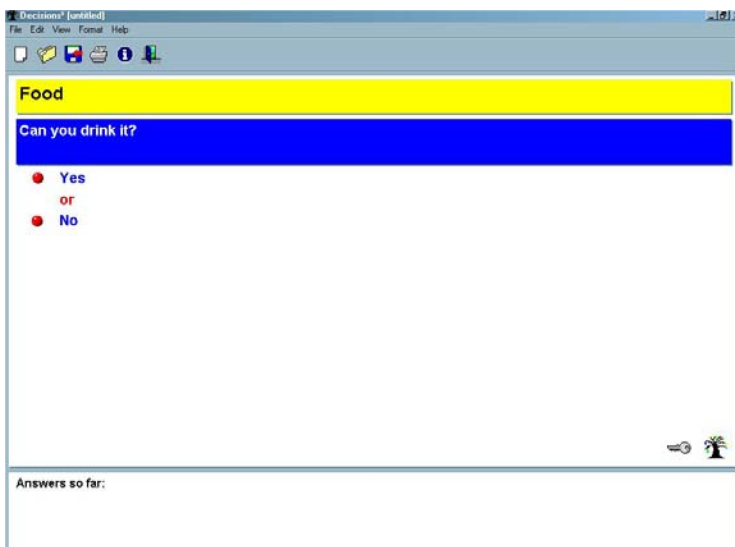


- 3) In the 'New Tree' dialogue box enter a name for your database.
- 4) Next type in the 'first question' that will divide the objects into 2 sets.



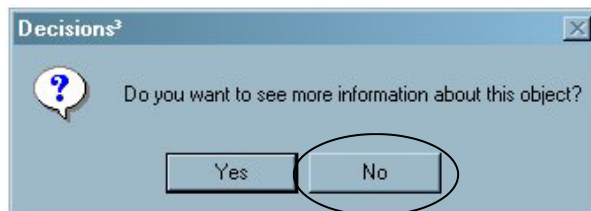
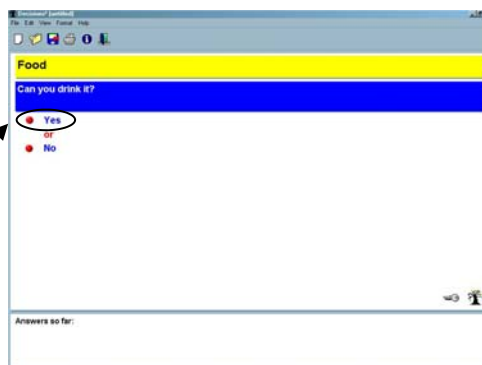
- 5) In the 'Answers' box type 'yes' and 'no'. After the equals sign you need to enter the name of one of the objects from each group. Make sure the names are relevant to the answer.

- 6) Finally click on 'OK'



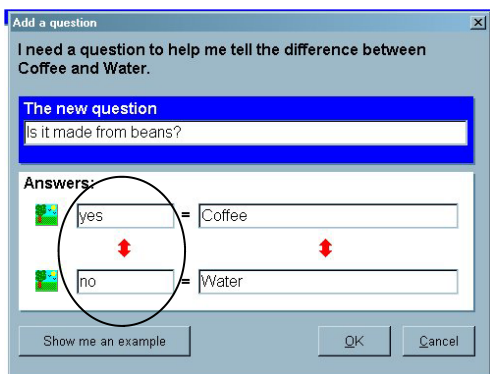
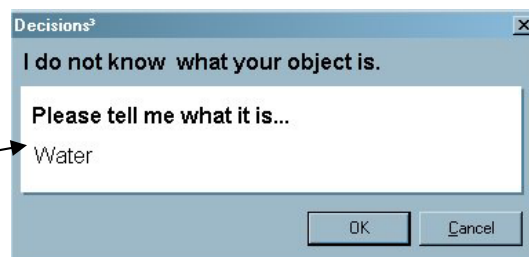
- 7) The program now takes you to the questioning screen. You need to answer these questions in order to add other objects to the database.

8) Lets consider the 2 drinks to begin with; coffee and water. The first question is 'Can you drink it'. The answer for both of these is 'yes' So we click on this.



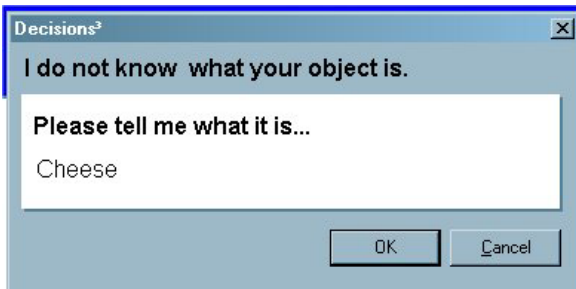
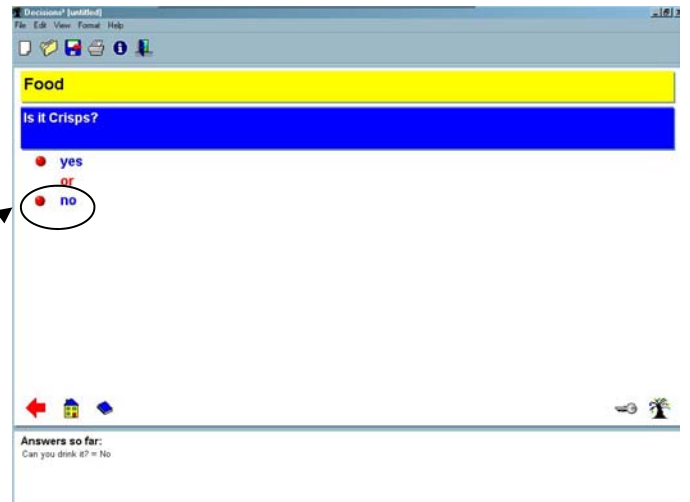
9) The next question is 'Is it coffee?'. If we have chosen this item then we would simply click 'yes' again and we are asked if we would like to see more information on this. At this point we can click 'no'

10) However if we had chosen water we would need to click 'no' when asked 'Is it coffee?'. The program now wants to know what it is. Enter 'Water' and click 'OK'.



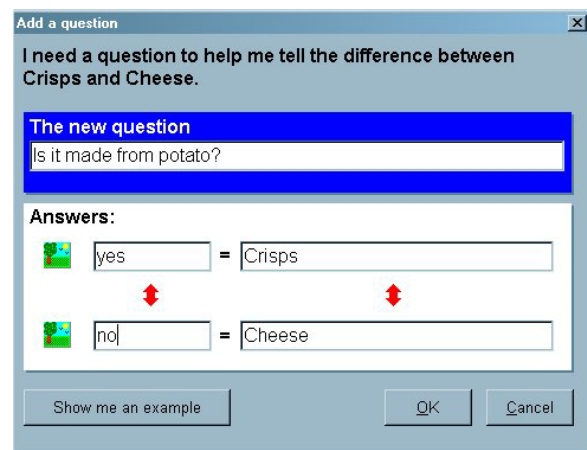
11) You now need to add a question to help the program distinguish between the 2 items which are drinks. After adding the question type 'yes' and 'no' next to the relevant items. Then click 'OK'.

12) The procedure is the same for the 2 items which are not drinks. At the first question 'Can you drink it?' click on 'no'. It will now ask if 'Is it Crisps?'. For one of the items this is obviously correct for the other you need to click 'no'.

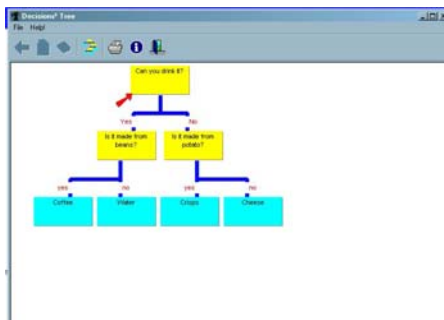


13) Once again you need to tell the program what the item is and click 'ok'.

14) You must type in another question and enter 'yes' and 'no' in the relevant boxes



More items and questions can then be added to the database.



You can view your branching database by click on the tree in the bottom right hand corner of your screen.

