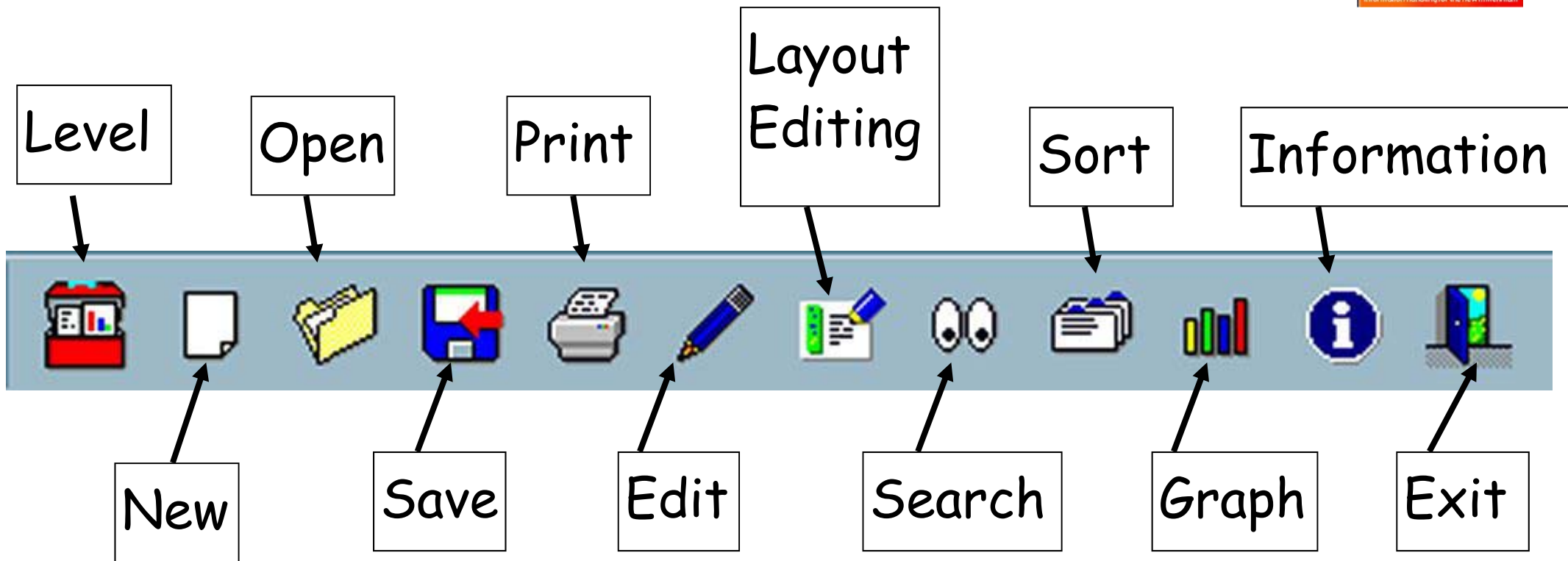
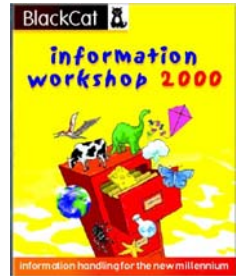


How to *search*



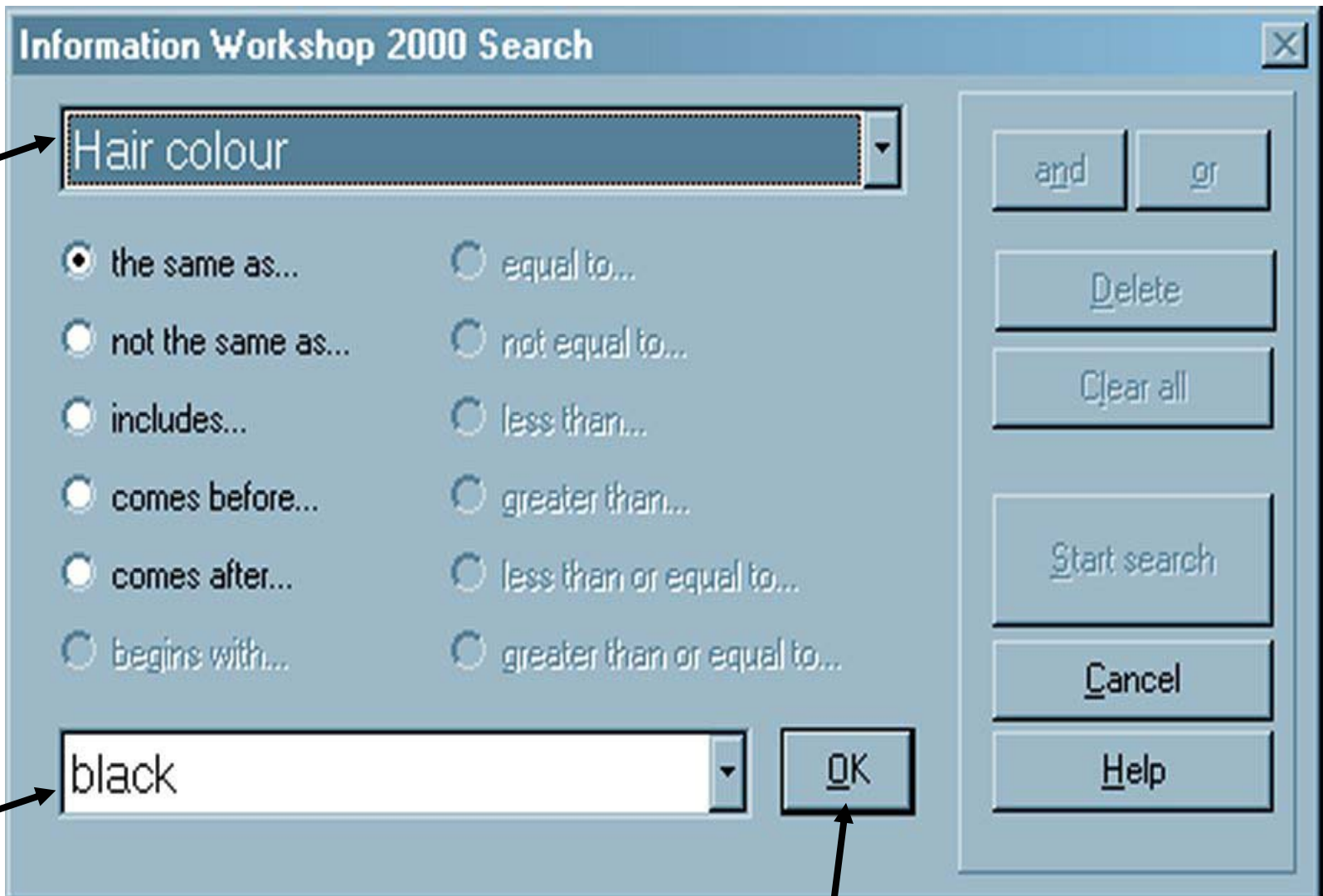
1. Click on the *eyes* icon to *search*.
2. Choose the *fieldname* you need.
3. Select the *field* you are searching for.
4. Click on *OK*.
5. Check the information in the box, then click *start search*.
6. The number of records the computer has matched should now be shown.

Information Workshop Toolbar



1

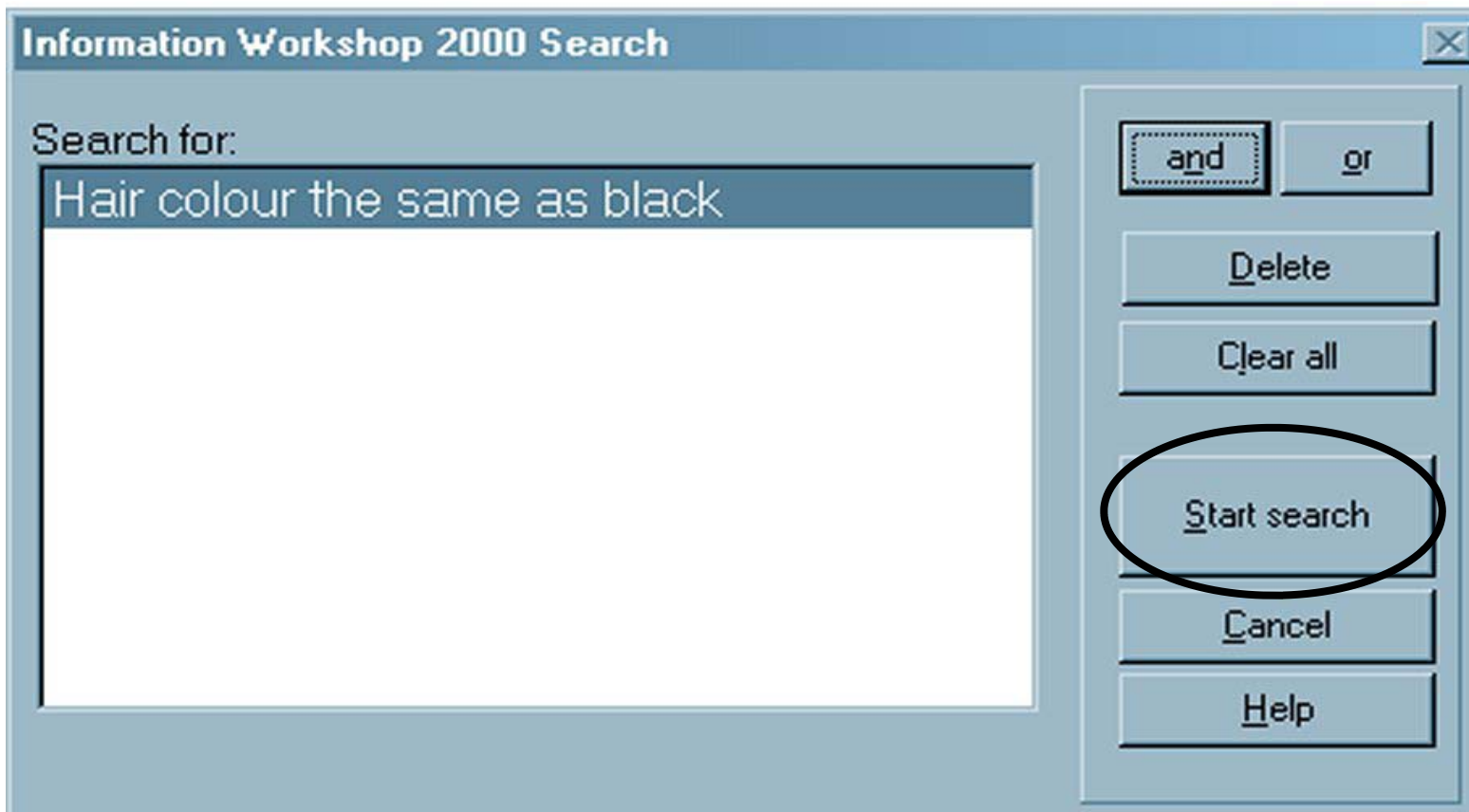
Fieldname

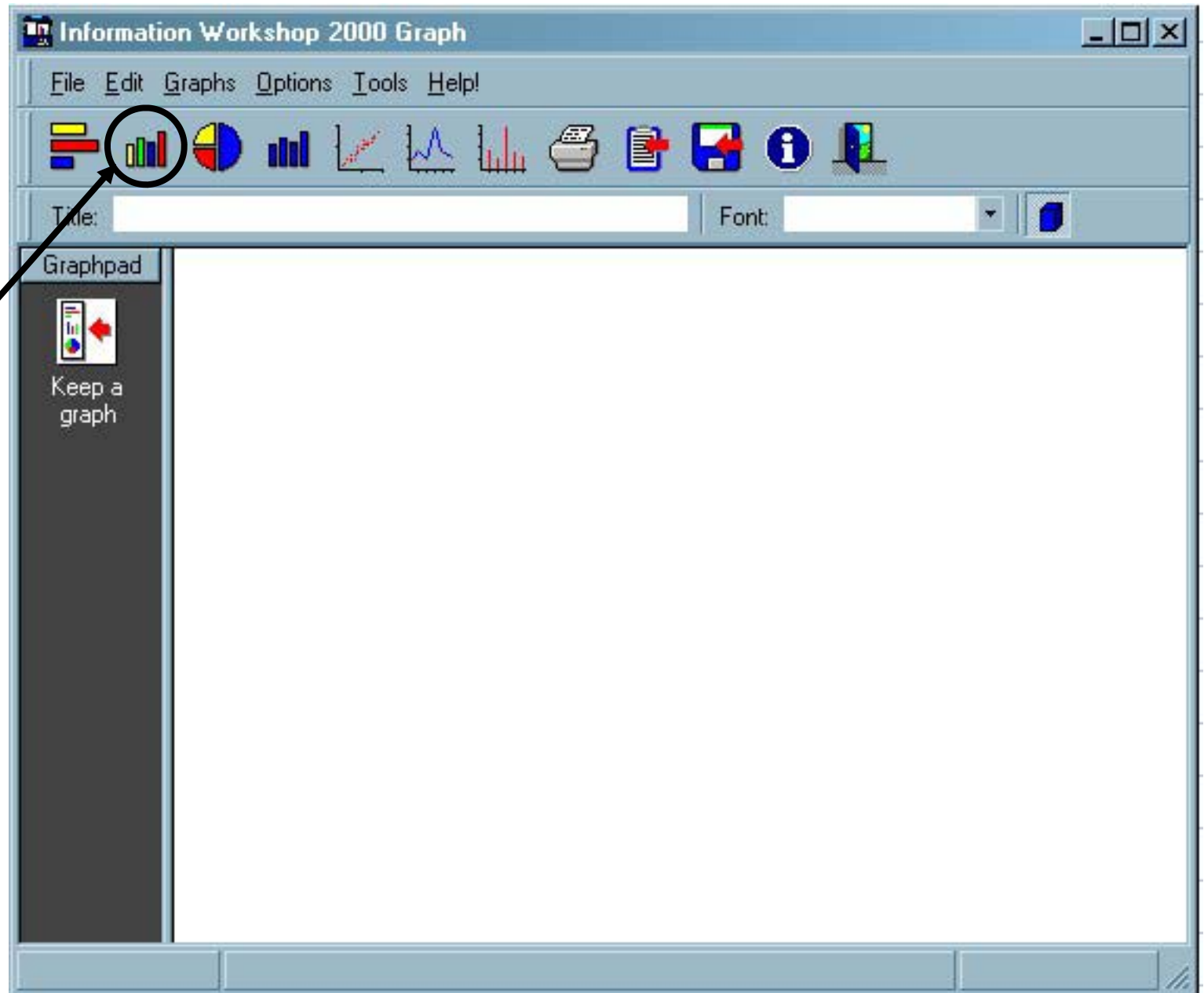


2

Field

3





Bar Chart
Option

Choose from the First Field

Choose fields to graph

First field:

- Name
- Sex
- Eye colour
- Hair colour
- Birthday
- Food

Second field:

- Age
- Height
- Weight
- Reach

All records Search

