

Surname						Other Names				
Centre Number						Candidate Number				
Candidate Signature										

General Certificate of Education

Geography
Decision Making Exercise

In addition to this paper you will require:

- A resource booklet

You may use a calculator

Time allowed: 50 minutes

Instructions

- Use blue or black ink for written answers. You may use pencil for maps, diagrams and graphs.
- Fill in the boxes at the top of this page.
- Answer **all** questions in the spaces provided.
- Do all rough work in this booklet. Cross through any work you do not want marked.

Information

- The maximum mark for this paper is 40.
- Mark allocations are shown in brackets.
- You will be assessed on your ability to use an appropriate form and style of writing, to organise relevant information clearly and coherently, and to use specialist vocabulary, where appropriate.

For Examiner's Use			
Number	Mark		
1	9		
2	10		
3	9		
4	12		
Total (column 1)			
Total			
Max 40			

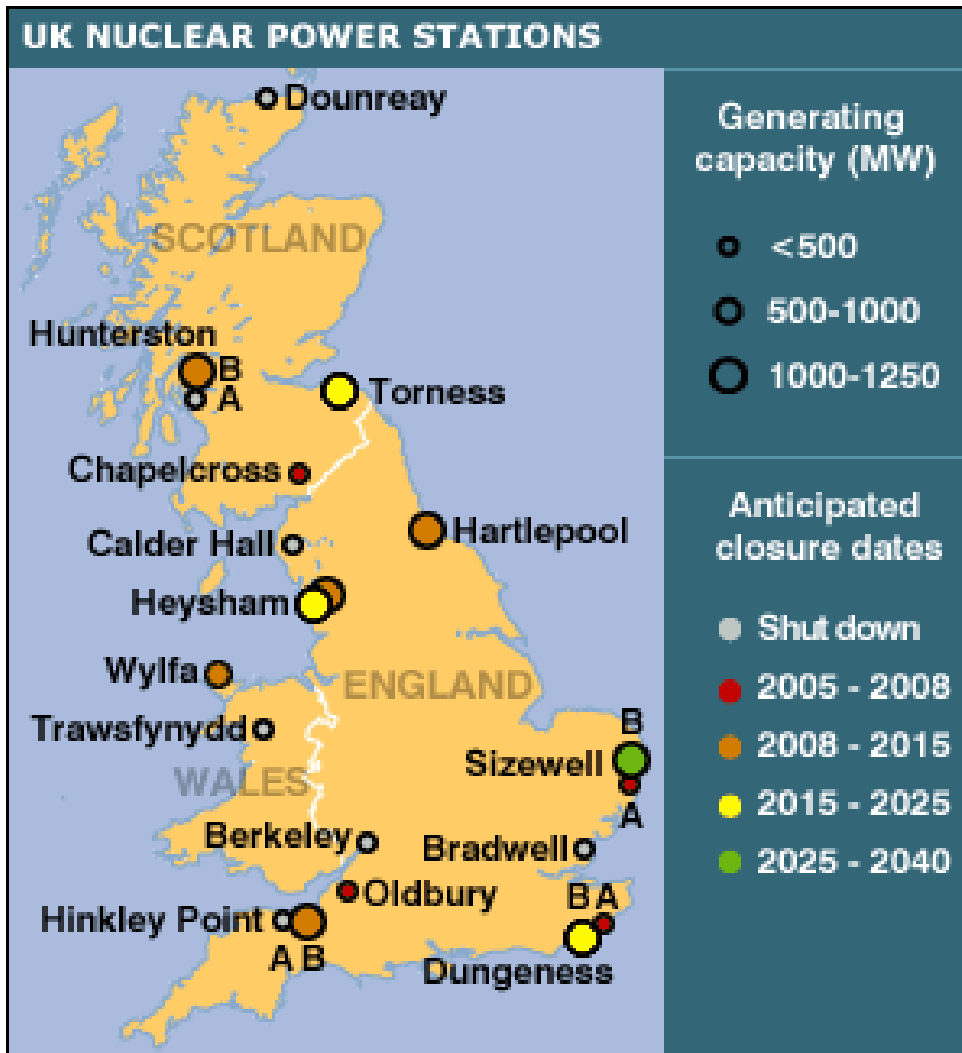
Answer **all** questions in the spaces provided

Total for this question: 9 marks

1

Study Figure 1, showing the location of nuclear power stations in the UK

Source: bbc.co.uk <http://news.bbc.co.uk/1/shared/spl/hi/guides/456900/456932/html/n1page1.stm>



In the year 2000 6.6% of all energy was produced by nuclear power

Did you know that!

World energy demand will quadruple in the next 50 years

The half life of plutonium is 24000 years

Figure 1

(a) (1) Using **figure 1**, suggest **two** reasons why nuclear power stations are located near the coastline.

1

2.....

(2 marks)

(2) Using the data on **Table 1** below complete **graph 1** at the base of the page in order to illustrate the global trend in energy use **then complete Q2(b) below.**

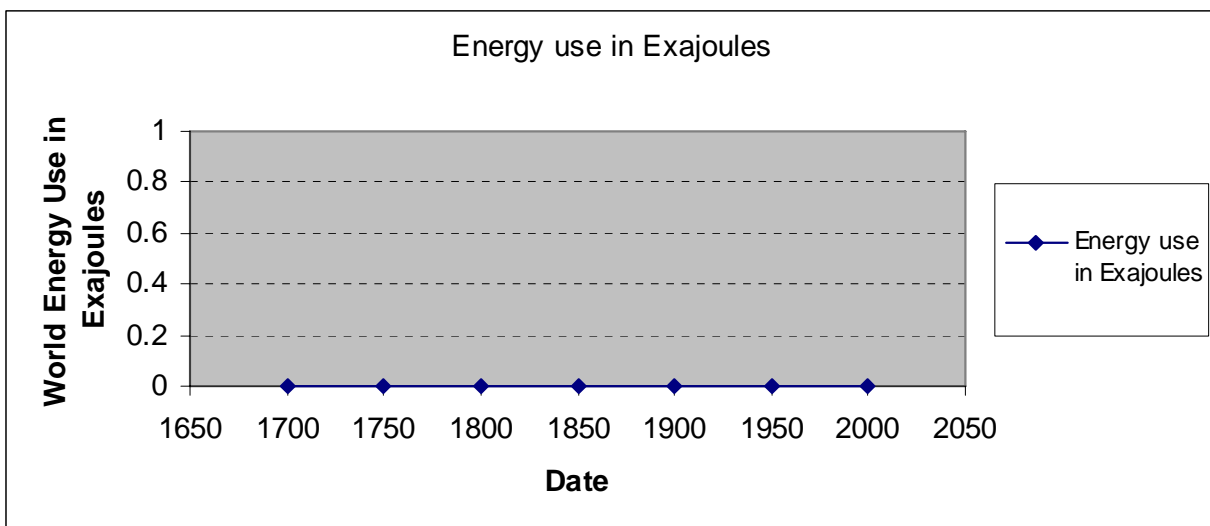
Date	Total energy use in Exajoules
1700	10
1750	11
1800	12
1850	20
1900	50
1950	100
2000	400

Table 1

(b) Using **Figure 1**, **Graph 1** and your knowledge, suggest why nuclear power may continue to be an important part of energy production.

.....

(4 marks)



Graph 1

(3 marks)

2.

Total for this question: 10 marks

Study **Figures 2, 3, 4 and 5**, in the resource booklet, which includes the background on some of the possible nuclear waste solutions and the location factors of where to develop the deep geological site.

- (a) **Figure 2 and 3** show different methods of disposing of nuclear Waste. Give one advantage and one disadvantage of each method.

Deep space disposal:

Advantage:

.....

Disadvantage

.....

(2 marks)

Deep Geological disposal:

Advantage:

.....

Disadvantage

.....

(2 marks)

- (b) Using the newspaper articles in figures 4 and 5 and your own knowledge outline what you understand about the term – bias.

Bias is

.....

.....

.....

(3 marks)

Continued on the next page 

(c) From **figures 2, 3, 4 and 5** explain why it is important that independent and neutral groups like the Committee on Radioactive Waste Management (CoRWM) make suggestions to the government on issues like nuclear waste?

.....

.....

.....

.....

.....

(3 marks)

Total for this question: 9 marks

3

Study **figure 7**, 'Stakeholders' views. Read these views carefully

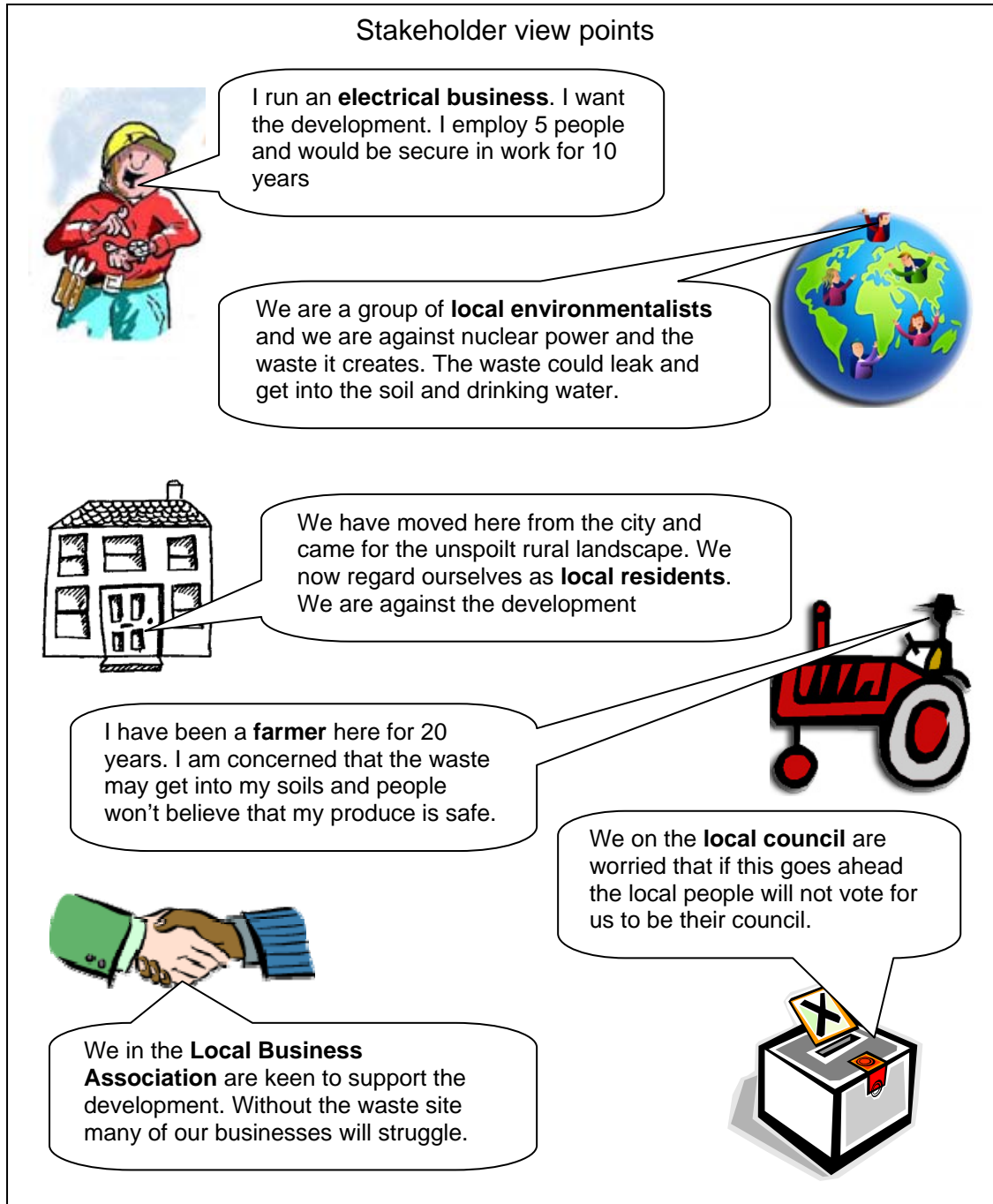


Figure 7

(a) What is meant by the term 'stakeholder'?

.....
.....

(1 mark)

(b) The Local Business Association have said that 'Without the waste site many of our businesses will struggle.'
Explain what you understand by this statement.

.....
.....
.....
.....
.....
.....
.....

(4 marks)

(c) Explain how the development of the nuclear waste site in an area could be both an advantage and a disadvantage to the local community.

.....
.....
.....
.....
.....
.....
.....

(4 marks)

Total for this question: 12 marks**4**

- (a) Study **Figure 6** on the resource sheet which shows the features of two possible locations for the deep geological site. Use the evidence from **Figure 6** and your own knowledge and choose the best location (**Site A or Site B**) for the final site.

Final site	
------------	--

Give reasons for your final choice

.....

.....

.....

.....

.....

.....

(4 marks)

- (b) Select one of the local stakeholders from **Figure 7** on page 5 and outline their point of view and the arguments they would use to back that viewpoint.

Write the name of the stakeholder and their viewpoint in the boxes below.

Chosen Stakeholder (Write in the next box)		For or against	
---	--	-------------------	--

Turn over →

